

The Ellipse product has a rich history of over 25 years as an enterprise solution for the Energy, Utilities and Transport industries. Specifically designed to meet the challenges of these industries the Ellipse solution is unrivalled in terms of depth of functionality and integration capability.

Version 5.2.3.7 saw the introduction of significant new features including Ellipse Enterprise Services, Mincom Work Planner and Mincom Ellipse Reporting (MER).

With version 6 bringing further enhancements in these areas together with more new functionality, Ellipse maintains itself as the leading Enterprise Work and Asset Management system available today.

Version 6.1 (released May 2006) Features include:

## Features

- Mincom Desktop
- Work Planner enhancements
- Mincom Ellipse Performance Support (SupportPoint)
- MER GL Report Writer/MER
- Approval Manager
- Funds Sufficiency Checking
- Benefits Administration
- Accounts Payable Field Length Increases
- Enhancements to Permit To Work Module
- Delphi .Net Upgrade
- IBM Websphere 6 only  
Note: Ellipse 6, customers will need IBM Websphere 6.
- Permit to Work enhancements
- Supplementary enhancements
- Long term asset strategy enhancements

## The highlights are:

### Ellipse Enterprise Services

Ellipse Enterprise Services expose the business logic of Ellipse as Web Services using open standards. This interface allows Ellipse to operate within a customer service oriented environment.

Usability improvements are made to both the WinView and WebView interfaces and there are security improvements including support for LDAP and Active Directory.

### Mincom Desktop

Easy access to information is at the core of every organisation. With Mincom Desktop your organisation has the means to make it happen. The new Mincom Desktop featuring an intuitive user interface delivers information more quickly to end users by enhancing access to business applications. By providing a single integrated

view of applications, the solution helps organisations realise significant business benefits through improved productivity.

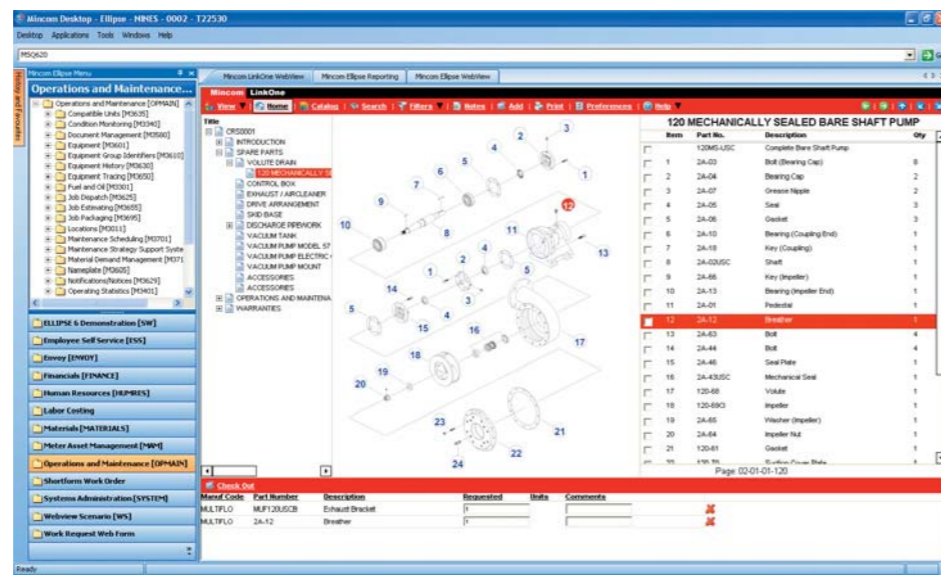
This new user interface will form the basic starting point for all Mincom applications in the future providing a consistent user experience.

### Mincom Work Planner Suite

Mincom Work Planner is a powerful suite of tools that supports short and long term asset strategy and work management scheduling process in three ways:

Mincom Work Planner to manage activities including the planning and scheduling of ad hoc and preventative jobs, linking jobs into logical groupings and planning and scheduling plant outages

Mincom Work Progress to graphically monitor and manage work in progress



Mincom Estimate Scheduling to graphically schedule job estimates as well as display ad hoc and preventative work for a complete view of all potential activity for any future time period.

With the Mincom Work Planner Suite, organisations will benefit from:

- Increased asset life
- Minimised asset downtime
- Increased asset productivity
- Reduced maintenance costs
- Optimised outage scheduling
- Maximised strategic use of planning function
- Decreased capital tied up in operating assets

### Mincom Ellipse Reporting (MER)

Mincom Ellipse Reporting (MER), powered by Business Objects™, is the new integrated reporting and business intelligence solution for Ellipse.

MER enables organisations to track, analyse, understand and manage their business in order to improve enterprise performance.

MER is totally integrated with Mincom Ellipse with the ability to run and schedule reports using the existing interfaces and mechanisms.

Customers can view their reports via Business Objects™ InfoView to using a browser interface or through the integrated view built into the Mincom Ellipse Explorer. Reports leverage the formatting capabilities available to browser based viewing mechanisms. In addition to HTML, customers can view reports using PDF, Microsoft's Excel and in CSV formats.

Customers are able to customise reports to their own specific needs and quickly generate sophisticated professional reports for all areas of the system with the one tool and skill set.

### Employee Performance Support

Do your employees know how to find the most accurate, up-to-date information on Ellipse and your corporate procedures? If they know how to find this information, do they know what to do when Ellipse standard procedures differ in subtle ways from your organization's internal procedures? The MEPS (Mincom Ellipse Performance Support) Product has been developed to allow you to customize the base-line Ellipse On line Support for the real-world environment of your workplace. Your internal procedures and process flows can be added to standard Ellipse content and your employee's help queries will seamlessly show both your critical business procedures integrated with Ellipse standard business processes and procedures. Context sensitivity and a robust search engine also make it easy to find related topics.

This just-in-time performance support tool designed using Panviva's SupportPoint Product will make it easier for your employees to do their daily jobs and easier for you to roll out new procedures to your employee base while eliminating the hassle of republishing, the cost of distributing materials, and the risk outdated materials. MEPS can be your one source for Ellipse process and procedural information.

Version 6.2 (available April 2007)

## Features

- Recoverable VAT
- General Ledger Sequential Voucher Numbering
- Document Type
- Purchasing Bulk Changes
- Ad Hoc Quoting
- Receipt Price Inventory Calculation
- Display Plant Number
- Copy Supplier Information between districts
- Award Interpreter
- Timekeeping
- Alignment of Auto Paid Employees
- Flexitime
- Labour Costing
- Leave Requests
- Higher Duties
- Advanced Rostering
- Training Administration
- Self Service
- Workflow
- Position Templates
- Security Enhancements
- Employee District Overrides
- Deductions Processing

## Supported Platforms

The supported platforms for Ellipse 5.2.3.7 and Ellipse 6 are noted in the tables below.

Ellipse 5.2.3.7 Platforms			
HP-UX 11i	Oracle 9i	TX-Series 5.5.1 /Tuxedo 8.1	Mincom Scheduler
Solaris 8/9	Oracle 9i	TX-Series 5.5.1 /Tuxedo 8.1	Mincom Scheduler
AIX 5.2/5.3	Oracle 9i	TX-Series 5.5.1 /Tuxedo 8.1	Mincom Scheduler
Windows 2003	Oracle 9i SQL Server	TX-Series 5.5.1 /Tuxedo 8.1	Mincom Scheduler

WebSphere / Weblogic as appropriate

Ellipse 6 Platforms			
HP-UX 11i	Oracle 10g	TX-Series 5.1 /Tuxedo 8.1	Mincom Scheduler
Solaris 9/10	Oracle 10g	TX-Series 5.1 /Tuxedo 8.1	Mincom Scheduler
AIX 5.2/5.3	Oracle 10g	TX-Series 5.1 /Tuxedo 8.1	Mincom Scheduler
Windows 2003	Oracle 10g SQL Server	TX-Series 5.1 /Tuxedo 8.1	Mincom Scheduler

WebSphere / Weblogic as appropriate